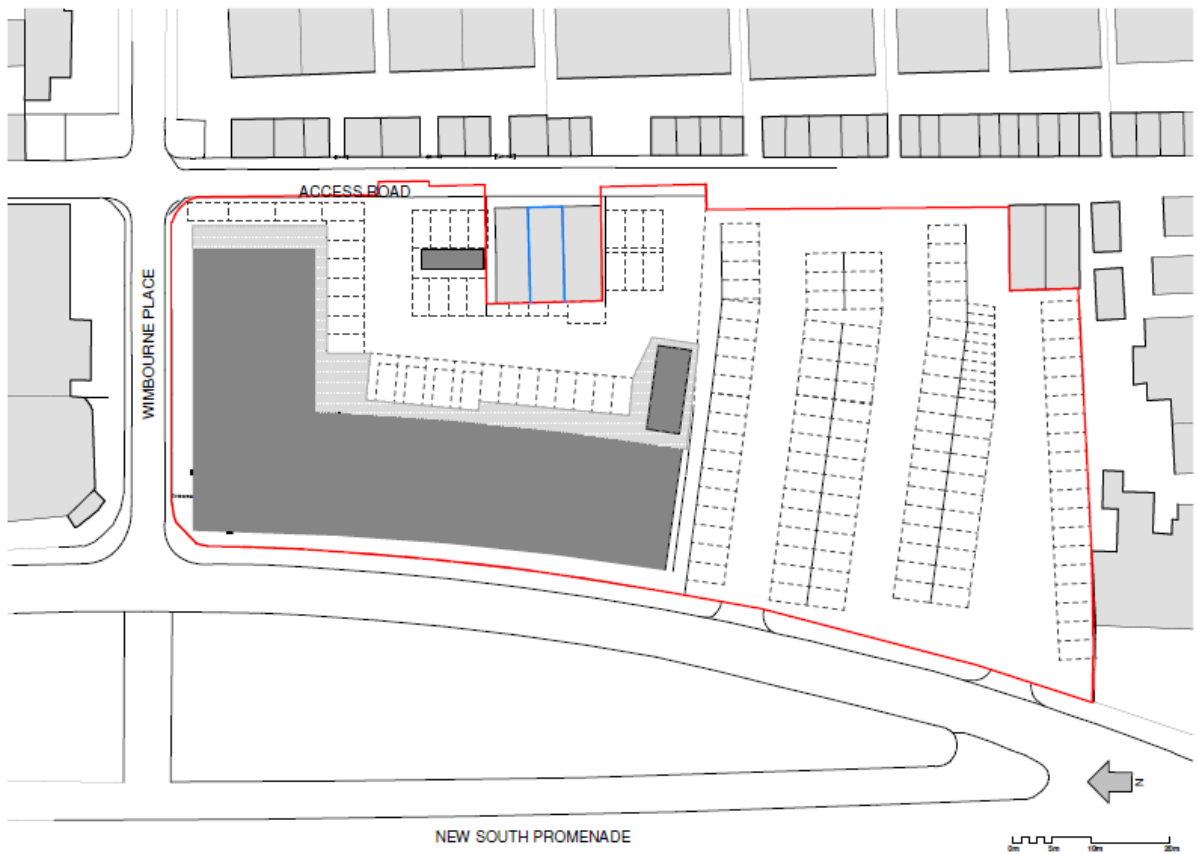
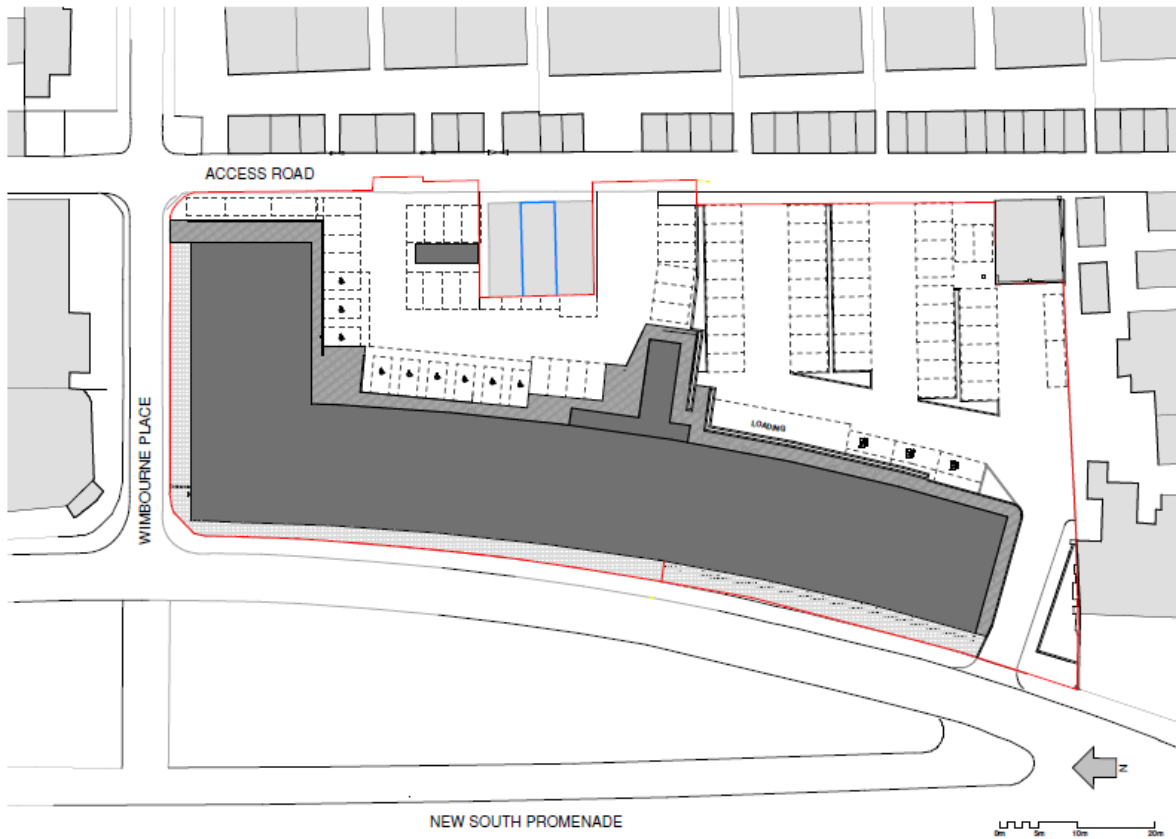


Appendix 6a





1 Proposed Site Plan
1:200



GENERAL NOTES

1. The building is to be constructed in accordance with the approved conditions of consent.
2. The building is to be constructed in accordance with the approved conditions of consent.
3. The building is to be constructed in accordance with the approved conditions of consent.
4. The building is to be constructed in accordance with the approved conditions of consent.
5. The building is to be constructed in accordance with the approved conditions of consent.

LEGEND

- 01. Double height windows to match existing. Metal mullion with bucket-handle joints.
 - 02. Two course brick finished facade roller cover.
 - 03. Flat Aluminium panel above ground floor partition windows.
 - 04. Powder coated aluminium entry screen doors with bronze vertical slats. Finished to match existing (RAL 1005).
 - 05. Double glazed windows with powder coated aluminium frames with 600 Series profile.
 - 06. Glass of high entrance doors, with powder coated aluminium frames.
 - 07. Glass curtain wall cover, with powder coated aluminium frames with 600 Series profile to match existing.
 - 08. External double doors, full height framed glazing, with powder coated aluminium frames to match other windows.
 - 09. Translucent glass screen panels.
 - 10. Translucent translucent panel fixed on back 200mm from adjacent building.
 - 11. Metal screen panels finished to match existing frames (RAL 1005).
 - 12. Aluminium framed screen to screen full glass. Finished to match metal panels (RAL 1005).
 - 13. Louver panels above ground floor windows. Finish finished to match metal panels (RAL 1005).
 - 14. Double glazed windows with translucent glass powder coated aluminium frames with 600 Series profile.
- LED strip lighting along building eaves

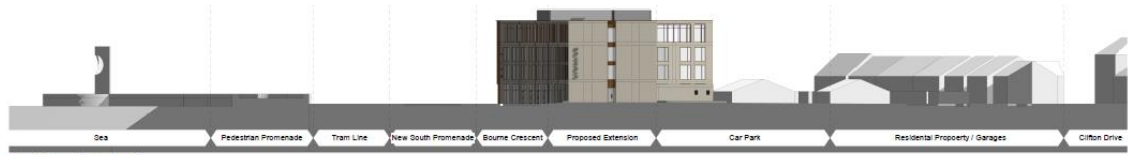
THE RECORD
ARCHITECTS
100/102
WIMBOURNE PLACE
SYDNEY NSW 1500
Tel: +61 2 9550 1100
www.therecord.com.au

Design of this building is based on the architectural drawings prepared by The Record Architects. The design is subject to the approval of the relevant authorities. The design is not to be used for any other purpose without the written consent of The Record Architects. The design is not to be used for any other purpose without the written consent of The Record Architects. The design is not to be used for any other purpose without the written consent of The Record Architects.





② West Elevation (New South Promenade) Contextual
1:200



① South Elevation Contextual
1:200



③ East Elevation Contextual
1:200